

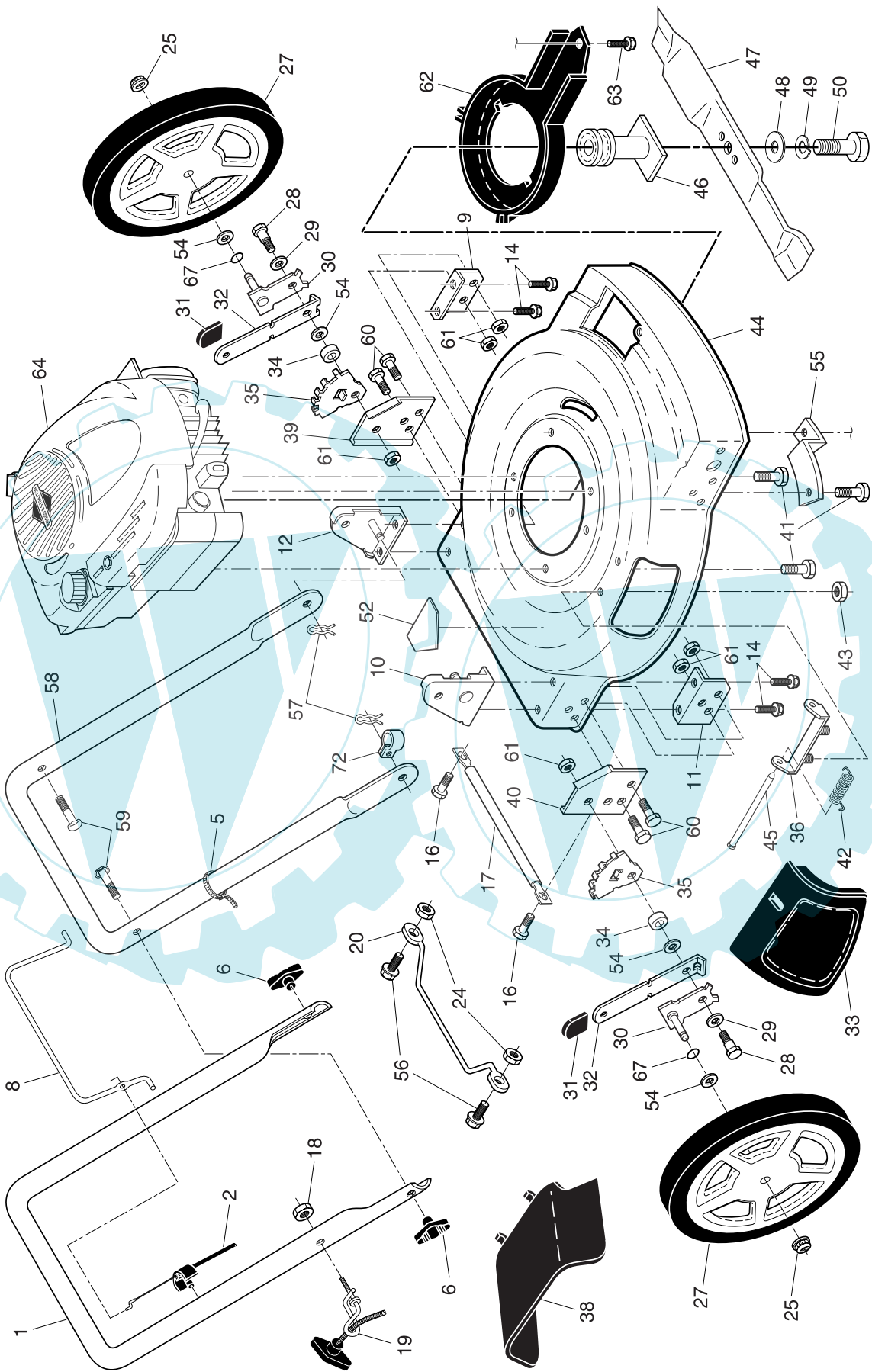
**REPAIR PARTS MANUAL**  
**MODEL NO. MM6556SMD**  
**MFG. ID. NO. 96121001400**  
**Rotary Lawn Mower**

---



**McCULLOCH**

**ROTARY LAWN MOWER -- MODEL NUMBER MM6556SMD (MFG. I.D. NUMBER 96121001400)**



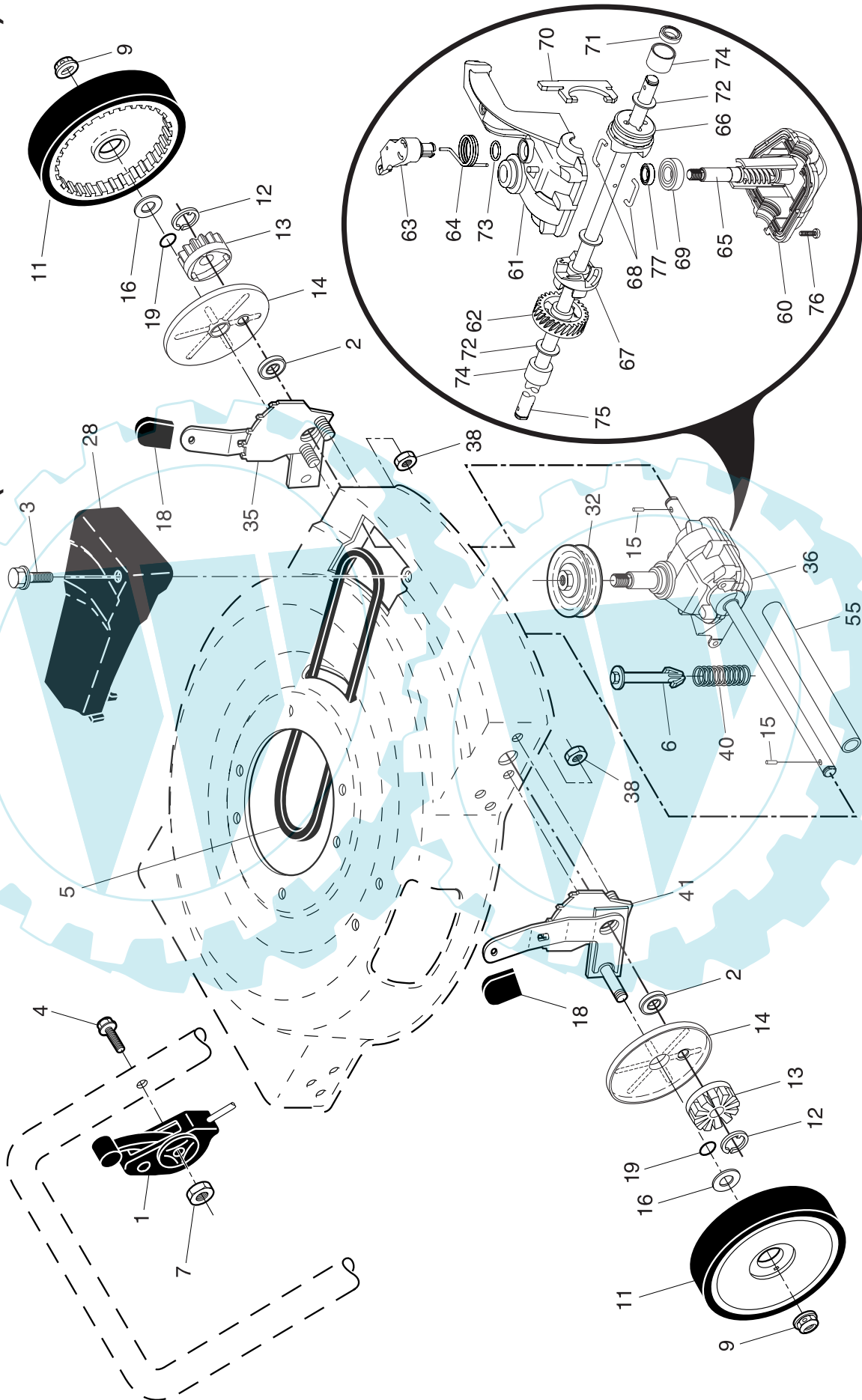
# ROTARY LAWN MOWER -- MODEL NUMBER MM6556SMD (MFG. I.D. NUMBER 96121001400)

KEY NO.	PART NO.	DESCRIPTION	KEY NO.	PART NO.	DESCRIPTION
1	532 17 76-98	Upper Handle	40	532 40 33-81	Support Bracket, RH
2	532 17 51-48	Engine Zone Control Cable	41	532 15 04-06	Screw, Hex Head, Threaded, Rolled 3/8-16 x 1-1/8
5	532 06 64-26	Wire Tie	42	532 15 21-24	Spring, Torsion
6	532 19 19-38	Handle Knob	43	873 80 04-00	Locknut, Hex
8	532 14 67-71	Control Bar	44	532 40 08-28	Kit, Mower Housing (Includes Key Number 52)
9	532 19 58-00	Support Bracket, Handle, LH	45	532 14 72-86	Rod, Hinge
10	532 17 09-75	Handle Bracket Assembly, RH	46	532 18 91-79	Blade Adapter / Pulley
11	532 19 57-99	Support Bracket, Handle, RH	47	532 19 93-79	Blade, 22"
12	532 17 09-77	Handle Bracket Assembly, LH	48	532 85 10-74	Washer, Hardened
14	532 14 97-41	Screw, Thread Cutting 5/16-18 x 3/4	49	532 85 02-63	Washer, Lock, Helical
16	532 05 45-83	Screw, Tapping, Hex Head 1/4-20 x 1/2	50	532 85 10-84	Screw, Hex Head 3/8-24 x 1-3/8 (Grade 8)
17	532 17 71-41	Rod, Support	52	532 18 21-66	Decal, Danger
18	532 13 20-04	Locknut, Keps	54	532 08 83-48	Washer, Flat 3/8
19	532 19 47-88	Rope Guide	55	532 19 09-39	Mounting Bracket, Debris Shield
20	532 15 41-47	Foot Guard	56	532 08 58-25	Screw, Hex Washer Head #10-24 x 1/2
24	532 06 91-80	Nut, Hex	57	532 05 17-93	Hairpin Cotter
25	532 14 52-12	Locknut, Hex 3/18-16	58	532 15 50-44	Lower Handle
27	532 40 31-22	Wheel & Tire Assembly, Rear, 12"	59	532 19 15-74	Handle Bolt
28	532 14 27-48	Shoulder Bolt	60	874 76 06-12	Bolt, Hex Head 3/8-16 x 3/4
29	532 06 16-51	Belleville Washer	61	532 75 15-92	Locknut, Hex
30	532 19 60-21	Axle Arm Assembly	62	532 18 87-84	Debris Shield
31	532 08 78-77	Knob, Selector	63	532 19 23-25	Screw, Debris Shield
32	532 14 17-30	Spring, Selector	64	- - -	Engine, Briggs & Stratton, Model Number 124K02 (Order parts from engine manufacturer)
33	532 15 18-89	Discharge Guard			O-Ring
34	532 14 66-30	Spacer	67	532 19 74-80	Clip, Cable
35	532 13 99-01	Bracket, Wheel Adjuster	72	532 19 79-91	Warning Decal (not shown)
36	532 15 41-32	Bracket, Housing	--	532 18 21-34	Operator's Manual, European
38	532 17 65-09	Deflector, Discharge	--	532 40 43-39	Operator's Manual, Scandinavian
39	532 40 33-82	Support Bracket, LH	--	532 40 43-40	

**NOTE:** All component dimensions given in U.S. inches. 1 inch = 25.4 mm.

**IMPORTANT:** Use only Original Equipment Manufacturer (O.E.M.) replacement parts. Failure to do so could be hazardous, damage your lawn mower and void your warranty.

ROTARY LAWN MOWER -- MODEL NUMBER MM6556SMD (MFG. I.D. NUMBER 96121001400)



**ROTARY LAWN MOWER -- MODEL NUMBER MM6556SMD (MFG. I.D. NUMBER 96121001400)**

KEY NO.	PART NO.	DESCRIPTION	KEY NO.	PART NO.	DESCRIPTION
1	532 18 45-88	Drive Control Assembly (Includes Cable)	41	532 19 51-07	Kit, Wheel Adjuster, RH (Includes Knob and Bearing)
2	532 08 80-58	Bearing, Wheel Adjuster	55	532 08 60-12	Drive Shaft Cover
3	532 14 36-03	Screw, Tapping, Pan Head #10-24 x 2-3/4	60	532 18 34-97	* Case, Lower
4	532 15 87-55	Screw, Machine, Pan Head 1/4-20 x 2-3/16	61	532 18 34-98	* Case, Upper
5	532 14 65-27	V-Belt	62	532 18 34-99	Gear, 27 Teeth
6	532 15 04-95	Bolt, Hex Head 1/4-20 x 2	63	532 18 35-00	Lever, Clutch
7	532 19 17-30	Nut, Hex	64	532 18 35-01	Spring, Return
9	532 08 39-23	Locknut, Hex	65	532 18 35-02	Shaft, Input
11	532 19 80-88	Wheel & Tire Assembly, Front, 8"	66	532 18 35-03	Dog, Movable
12	812 00 00-58	E-Ring	67	532 18 35-04	Dog, Fixed
13	532 75 00-03	Pinion	68	532 18 35-05	Wire, Formed
14	532 18 94-03	Dust Cover	69	532 18 35-06	Bearing, Ball
15	532 19 10-17	Pawl, Drive	70	532 18 35-07	Fork, Shift
16	532 06 77-25	Washer	71	532 18 35-08	Seal, Output Shaft
18	532 08 78-77	Knob, Selector	72	532 18 35-09	Washer
28	532 19 58-11	Drive Cover	73	532 18 35-10	Seal, Case
32	532 19 41-26	Pulley, Drive	74	532 18 35-11	Bushing
35	532 19 51-10	Kit, Wheel Adjuster, LH (Includes Knob and Bearing)	75	532 19 65-61	Shaft, Output
36	532 19 49-36	Gear Case Assembly, Complete	76	532 18 35-13	Screw
38	873 80 04-00	Locknut, Hex	77	532 18 35-14	Seal, Input Shaft
40	532 13 70-90	Spring			

\* Use Dow Corning #709 to reseal Gear Case Halves.

**NOTE:** All component dimensions given in U.S. inches. 1 inch = 25.4 mm.

**IMPORTANT:** Use only Original Equipment Manufacturer (O.E.M.) replacement parts. Failure to do so could be hazardous, damage your lawn mower and void your warranty.

## LIMITED WARRANTY

The Manufacturer warrants to the original consumer purchaser that this product as manufactured is free from defects in materials and workmanship. For a period of two (2) years from date of purchase by the original consumer purchaser, we will repair or replace, at our option, without charge for parts or labor incurred in replacing parts, any part which we find to be defective due to materials or workmanship. This Warranty is subject to the following limitations and exclusions.

1. This warranty does not apply to the engine. Please contact your nearest dealer where they will send the machine to the engine manufacturer.
2. Transportation charges for the movement of any power equipment unit or attachment are the responsibility of the purchaser. Transportation charges for any parts submitted for replacement under this warranty must be paid by the purchaser unless such return is requested by your dealer.
3. Battery Warranty: On products equipped with a Battery, we will replace, without charge to you, any battery which we find to be defective in manufacture, during the first ninety (90) days of ownership. After ninety (90) days, we will exchange the Battery, charging you 1/12 of the price of a new Battery for each full month from the date of the original sale. Battery must be maintained in accordance with the instructions furnished.
4. The Warranty period for any products used for rental or commercial purposes is limited to 90 days from the date of original purchase.
5. This Warranty applies only to products which have been properly assembled, adjusted, operated, and maintained in accordance with the instructions furnished. This Warranty does not apply to any product which has been subjected to alteration, misuse, abuse, improper assembly or installation, delivery damage, or to normal wear of the product.
6. Exclusions: Excluded from this Warranty are belts, blades, blade adapters, normal wear, normal adjustments, standard hardware and normal maintenance.
7. In case of any problem within the boundaries of this warranty, contact the nearest department store, indicate the model number, serial number and the date of purchase of your machine. This warranty does not apply to accidental damages. All implicit warranties are limited to the same time frames. Or contact:

E.M. Services  
54 Rue Lambrechts  
92400 Courbevoie  
France  
Telephone: (1) 46678078  
Fax: (1) 46678095

THIS WARRANTY DOES NOT APPLY TO INCIDENTAL OR CONSEQUENTIAL DAMAGES. ANY IMPLIED WARRANTIES ARE LIMITED TO THE SAME TIME PERIODS STATED HEREIN.

## SERVICE NOTES



